

Operating the Multi-QSO Parties Using CQ/X

Introduction – The purpose of this document is to describe how to use CQ/X to operate multiple QSO parties that occur on several weekends. It includes how to operate and log QSOs in the Multi-QP as well as how to split the logs for submission to the individual parties. For example as of this writing:

In mid-April there is a weekend with the following three QSO parties

- Georgia QSO Party or GQP
- New Mexico QSO Party or NMQP
- Montana QSO Party or MTQP

On the next weekend there are the following five QSO parties

- Michigan QSO Party or MIQP
- South Dakota QSO Party or SDQP
- Ontario QSO Party or ONQP
- North Dakota QSO Party or NDQP
- Nebraska QSO Party or NEBQP

In early May there is a weekend with the following three QSO parties:

- Seventh Call Area QSO Party or 7QP
- New England QSO Party or NEQP
- Indiana QSO Party or INQP

In late August there is a weekend with the following three QSO parties:

- Ohio QSO Party
- Kansas QSO Party
- Hawaii QSO Party

Then in early-October a weekend with the following two QSO parties:

- Pennsylvania QSO Party
- Arizona QSO Party

And in mid-October there is a weekend with the following two QSO parties:

- New York QSO Party
- Iowa QSO Party

Fortunately the individual contests on the late April and early May weekends as well as the New York and Iowa parties have the same exchange (CALL + RST + QTH) allowing easy creation of the

Operating the Multi-QSO Parties Using CQ/X

multi-contests 7-NE-IN-QSOPARTY, and NY-IA-QSOPARTY which can be used to log contacts from any of those parties.

And the August contests have similar exchanges (CALL + NUM + QTH) where in the Ohio QP the NUM is an incrementing sequence number and in the Kansas and Hawaii QPs the NUM is a signal report. So in this case the main challenge is to know, or have the software know, when to send signal report and when to increment and send a sequence number.

In addition the mid-October contests have somewhat similar exchanges (CALL + NUM + QTH) but with additional "twists". In the Pennsylvania QP the number is an incrementing sequence number and the QTH is an ARRL section abbreviation, whereas in the Arizona QP the number is a signal report and the QTH is the state. So in this case there two challenges: 1. knowing when to send RST vs sequence and 2. knowing when to send ARRL section vs state.

The mid-April contests (GQP-NMQP-MTQP) require the most work to implement as a single concurrent contest since GQP and MTQP use signal report in the exchange whereas NMQP uses name. Details of how to operate this contest are given in the Operation section below.

If you are outside the target areas operate in one of these "multi-contests" by choosing 7-NE-IN-QSOPARTY, KS-OH-HI-QSOPARTY, NY-IA-QSOPARTY, PA-AZ-QSOPARTY, GA-NM-MT-QSOPARTY, or MI-SD-ON-QSOPARTY when starting up. You will notice that there is only one choice of location -- Outside. On the other hand if you are inside one of the target areas you should just choose your normal QSO party since support is not yet provided for working a multi-QP from inside one of the target areas.

Operation

7-NE-IN-QSOPARTY: Once you have chosen the 7-NE-IN-QSOPARTY operate it in normal fashion but be sure to log the New England counties using their five-character abbreviations since the following INQP counties create an ambiguous entry which could be in either INQP or NEQP if only three characters are used and would lead to confusion when splitting the log: BAR, BEN, CAR, FRA, HAN, HAR, KNO, NEW, ORA, SUL.

KS-OH-HI-QSOPARTY: Note that there are several duplicate county abbreviations in the KS-OH-HI-QSOPARTY which have been removed by appending an HI to the right hand side of each of the normal Hawaii county abbreviations. In order to get CQ/X to recognize and log these counties you will need to include the HI in the entry. The other challenge in this multi-contest is to send the correct number to the other station depending on whether the station is in KS, HI, or OH. The software has information about each county abbreviation to allow it to know from the county abbreviation that you entered whether you are working KS, HI, or OH. Also when you make your first QSO with a given station the software records, from the entered county, whether that station is a KS, HI or OH station so that the next time you work it the software will know whether to send RST or an incremented sequence number. So it is important on your first QSO with a station to defer sending your exchange until you have entered at least the county of

Operating the Multi-QSO Parties Using CQ/X

the other station – normally this is what you would do but sometimes you might need to enter or revise the county entry after sending the exchange. Also included in the software is a small file of calls that have been recently active in the Ohio QP. The file is located in the LogData subdirectory and is called OHQP_Calls.txt. You can edit that file if you like but be sure to leave the name unchanged. To help you know whether the software has enough information to decide on the proper exchange there is a Red/Green indicator just to the left of the QSO entry box. Finally concerning your messages be sure to include a ^ character in any message you want to contain the sequence number or RST. It is not necessary to embed 5NN or 599 in your messages since the software will handle that.

NY-IA-QSOPARTY: Note that there are thirteen common county abbreviations between NY and IA. To distinguish them the characters NY or IA have been appended to all the abbreviations of counties in New York and Iowa respectively. For the abbreviations that aren't common the complete abbreviation will be detected as soon as you type the first three letters For the common ones the complete abbreviation will be detected as soon as you enter the appended N or I. The appended NY and IA will be automatically removed when the log is split into individual logs.

PA-AZ-QSOPARTY: In this multi-QP there are no duplicate county abbreviations since AZ uses a five character abbreviation and PA uses three characters. The main challenge in this mult-QP is to send the correct number and the correct QTH -- your sequence number and section if you are working PA or a signal report and your state if you are working AZ. The software has information about each county abbreviation to allow it to know from the county abbreviation that you (may have) entered whether you are working PA, or AZ. Also when you make your first QSO with a given station the software records, from the entered county, whether that station is a PA station so that the next time you work it the software will know whether to send RST or an incremented sequence number even before you enter the county. So it is important on your first QSO with a station to defer sending your exchange until you have entered at least the county of the other station – normally this is what you would do but sometimes you might need to enter or revise the county entry after sending the exchange. Also included in the software is a small file of calls that have been recently active in the Pennsylvania QP. The file is located in the PAAZ_QSOParty subdirectory and is called PAQP_Calls.txt. When you work a PA station that station's call is added to the file. Also you can edit that file if you like but be sure to leave the name unchanged. To help you know whether the software has enough information to decide on the proper exchange there is a Red/Green indicator just to the left of the QSO entry box. Finally concerning your messages be sure to include a ^ character in any message you want to contain the sequence number or RST and any message in which your QTH is to appear enter it as your section. The software will automatically change your section in any messages to your state as necessary based on the location of the station you are working.

GA-NM-MT-QSOPARTY: Note that there are several duplicate county abbreviations in the GA-NM-MT-QSOPARTY which have been removed by appending the state postal code to the normal county abbreviation. Except in those cases where there is ambiguity the state postal code will be automatically appended once the normal abbreviation has been typed. The software has

Operating the Multi-QSO Parties Using CQ/X

information about each county abbreviation to allow it to know from the county abbreviation that you entered whether you are working GA, NM, or MT. Also when you make your first QSO with a given station the software records, from the entered county, whether that station is a GA, NM or MT station so that the next time you work it the software will know whether to send RST or a name. So it is important on your first QSO with a station to defer sending your exchange until you have entered at least the county of the other station – normally this is what you would do but sometimes you might need to enter or revise the county entry after sending the exchange. In setting up your messages be sure to include both a signal report and your name in the SPX message and be sure to have the name be just after, but space delimited from, the signal report. When you split the log the postal codes will be removed.

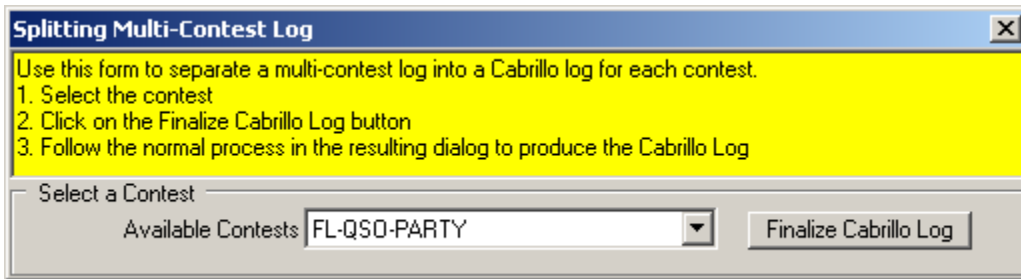
MI-SD-ON-ND-NE-QSOPARTY: Note that there are several duplicate county abbreviations in the MI-SD-ON-ND-NE-QSOPARTY which have been removed by appending the state/province postal code to the normal county abbreviation. Except in those cases where there is ambiguity the postal code will be automatically appended once the normal abbreviation has been typed. The software has information about each county abbreviation to allow it to know from the county abbreviation that you entered whether you are working MI, SD, ON, ND, or NE. Also when you make your first QSO with a given station the software records, from the entered county, whether that station is a MI, SD, ON, ND, or NE station so that the next time you work it the software will know whether to send RST or a sequence number. So it is important on your first QSO with a station to defer sending your exchange until you have entered at least the county of the other station – normally this is what you would do but sometimes you might need to enter or revise the county entry after sending the exchange. In setting up your messages be sure to include both a signal report and a sequence number embedded symbol (^) in the SPX message and be sure to have the sequence number symbol be just after, but space delimited from, the signal report. If you want to have characters like NR preceding the actual number that is ok. When you split the log the postal codes will be removed. Most operators do not call CQ when outside of the state(s) of a state QSO party but if you do call CQ and a station comes back that you have not worked before the number sent on the first exchange will be 5NN. When the station replies and sends a sequence number or a Michigan county abbreviation you can then press F6 (assuming you have set that up for your S&P exchange) and the correct sequence number will be sent.

Creating the Individual Logs

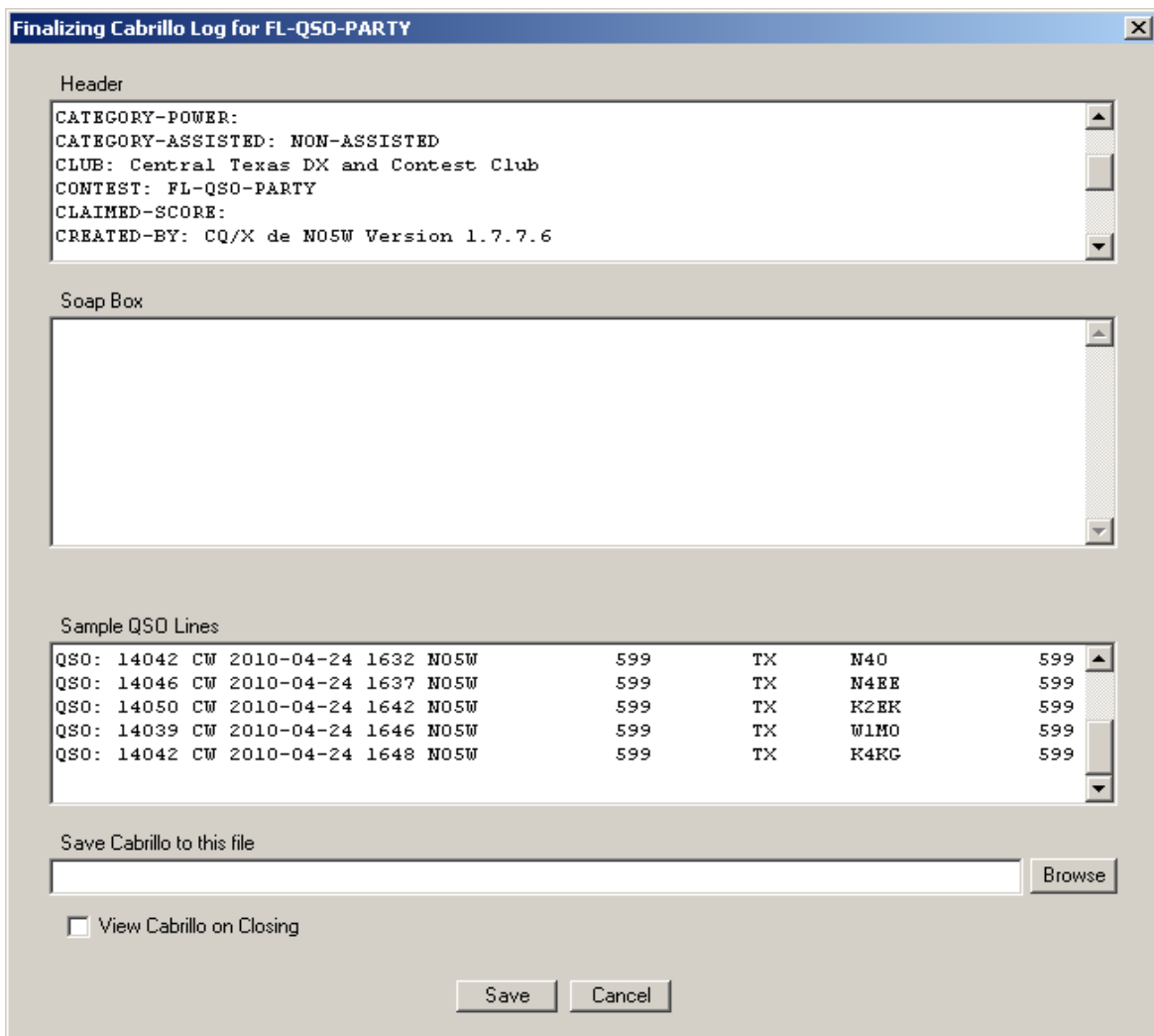
It is best to operate your entire operating period as a Multi-QP. It is best to hold off on splitting the logs until you are ready to finalize all logs. Also it is my understanding that you have the option of submitting your combined log to each of the QSO parties involved in the 7QP+NEQP+INQP weekend and they will sort out the QSOs and mults. I am not certain whether the other parties will do the same. However, the software has the capability of splitting the log into separate logs for each party.

If you are operating from outside the target areas once you are ready to create the final log for each of the individual contests use menu item **File | Split Multi-Contest Log** to activate the

Operating the Multi-QSO Parties Using CQ/X



following dialog for creating either backup or final copies of your Cabrillo log:
Select the contest and then click on the Finalize Cabrillo Log button. The following form for producing the final Cabrillo-formatted log for that contest will be displayed.



If you plan to submit the resulting file as your final log you should enter your soapbox comments and review the header information. However, you may want to regard this file as a backup Cabrillo log and wait to enter soapbox comments on the Cabrillo that you can produce

Operating the Multi-QSO Parties Using CQ/X

during the final scoring process described below. In either case you should specify where to save the Cabrillo file and then click on the Save button. Then repeat this process for the other contests in the Multi-QP.

After completing the above process for each of the contests in the Multi-QP you will have Cabrillo files that can be submitted to the sponsor except that there are a few items in the Cabrillo header that you will need to review and edit. These include the CATEGORY-POWER and the CLAIMED-SCORE. You know your power so that item can be edited manually using a text editor such as Notepad and you could leave the score blank. However the following process will handle both of those items.

Caution: The following assumes that you have completed the above process for each of the contests in the Multi-QP

Calculating Claimed Score and Performing Other Operations for Individual Logs of a Multi-QP

Once you have split the log into the backup Cabrillo logs for each of the contests the following process can be used to calculate the final claimed score for each contest, and for preparing your data for a 3830 report. It can also be used to prepare your final submission to the log checkers and to 3830.

For ease of reference, and ignoring the fact that this multi-QP no longer exists, it is assumed that you have just operated in the multi-QP consisting of the Florida QSO Party and the Nebraska QSO party and that you have saved the individual backup Cabrillo-formated logs for those two contests. During that process an intermediate file was produced for each of the contests and saved in the LogData subdirectory as LV_FL-QSO-PARTY.log and LV_NEB-QSO-PARTY.log. You can use those files in the following process to develop your final submission including claimed score for each contest as well as statistics, and data for posting on 3830

1. Use the **File | New Contest** menu item to select the Florida QSO Party
2. Go through the process of changing to that party, entering your power, your club, and other information.
3. After exiting the New Contest dialog Close CQ/X
4. Delete the file CQxClientLogView.Log that is in the CWSOft\CQxClient\ directory
5. Copy the file LV_FL-QSO-PARTY.log into the CWSOft\CQxClient\ directory.
6. Rename that copy of LV_FL-QSO-PARTY.log to CQxClientLogView.log
7. Restart CQ/X
8. At this point CQ/X is setup to operate and perform any other operations with the Florida QSO Party.
9. The score, QSOs, and Mults will be shown on the normal Score tab.
10. Now choose menu item **File | Finalize Cabrillo Log** and go through the normal process for completing the Cabrillo log.
11. Use the menu item **File | Post to 3830 Reflector** to post your 3830 comments for FQP

Operating the Multi-QSO Parties Using CQ/X

Once you have finished with the FQP log perform similar steps for the Nebraska QSO Party.

Of course a similar process applies to the logs created for the other multi-QPs.

Limitations -- The following limitation will be addressed in future releases.

- The QSO parties mentioned are the only multi-contests supported at this time.
- Due to overlapping county abbreviations in several of the parties it is necessary to append a postal code abbreviation (GA, NM, MI, etc) to the normal county abbreviations when entering them. These appended characters are automatically removed by the program when the log is being split into individual logs for final submission.